



*Lucky Plaza*

**THE MANAGEMENT CORPORATION STRATA TITLE PLAN NO.651**

Management Office: 304 Orchard Road #06-50 Lucky Plaza Singapore 238863 Tel: 6235 3294 Fax: 6734 4764 [www.luckyplaza.com.sg](http://www.luckyplaza.com.sg)

# **MEDIA KIT**

## **YEAR 2024**

**COPYRIGHT:**

**NO PART OF THIS DOCUMENT IS ALLOWED TO BE USED, CIRCULATED, DISSEMINATED, DUPLICATED OR WHATSOEVER WITHOUT THE PRIOR PERMISSION FROM THE MANAGEMENT CORPORATION OF LUCKY PLAZA (MCST 651).**

**ALL CHARGES PERTAINING TO INSTALLATION AND CONSTRUCTION OF LIGHTBOXES, PANELS AND STICKER-WRAPPS INCLUDING LICENCE APPLICATION WITH BCA ARE BORNE BY LICENSEE.**

**LICENSEE WILL MAINTAIN THE ADVERTISEMENT SITE/S THROUGHOUT LEASE PERIOD.**

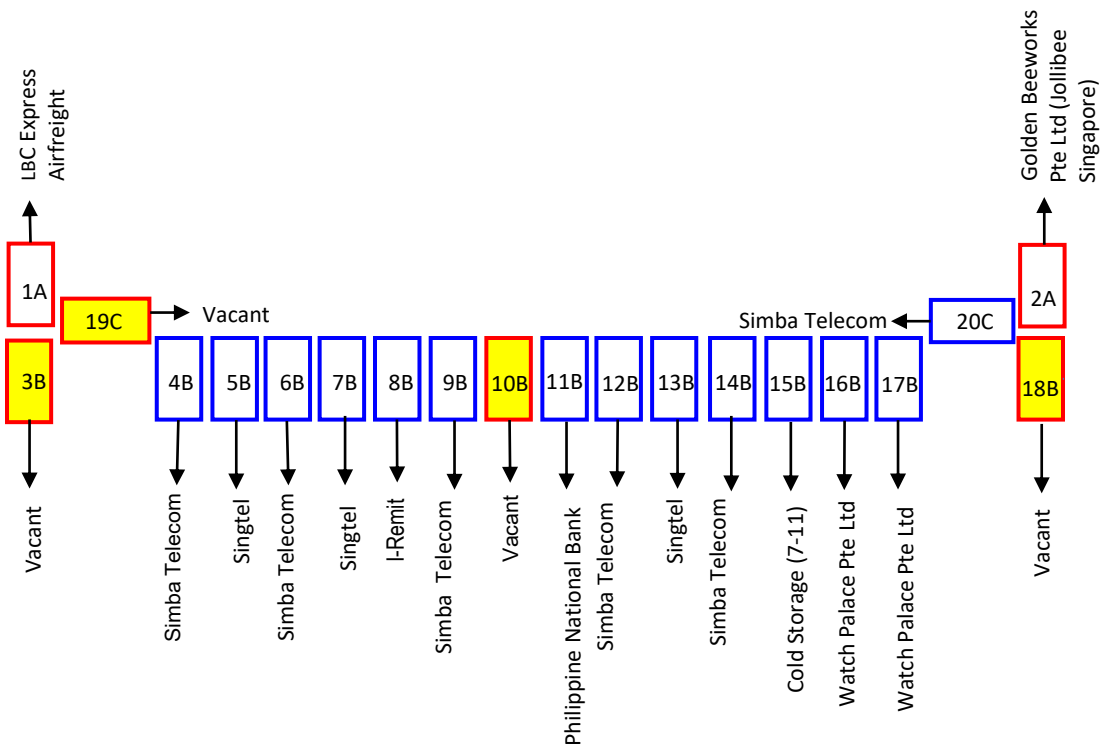
- All rates quoted herein are subjected to electricity charges, where applicable, GST.
- All specifications/dimensions provided are only an estimation and not to be used for the final installation of the lightbox/panel/sticker-wraps.
- All applications will be reviewed by the Management Council.
- The MCST reserves the right to edit the information contained herein as it deemed fit.

## THE MANAGEMENT CORPORATION STRATA TITLE PLAN NO.651

Management Office: 304 Orchard Road #06-50 Lucky Plaza Singapore 238863 Tel: 6235 3294 Fax: 6734 4764 www.luckyplaza.com.sg

## ADV. CODE: CNS

## LOCATED ALONG THE WALKWAY OF LUCKY PLAZA



- Est. dimension: 1998MM X 505MM X 150MM
- Lease Duration: 1 year
- Lightbox: Property of MCST 651  
To be maintained by Licensee

- All rates quoted herein are subjected to electricity charges, where applicable, GST.
- All specifications/dimensions provided are only an estimation and not to be used as the final installation of the lightbox/panel/sticker-wraps.
- All applications will be reviewed by the Management Council.
- The MCST reserves the right to edit any information contained herein as it deemed fit at any time.



*Lucky Plaza*

**THE MANAGEMENT CORPORATION STRATA TITLE PLAN NO.651**

Management Office: 304 Orchard Road #06-50 Lucky Plaza Singapore 238863 Tel: 6235 3294 Fax: 6734 4764 [www.luckyplaza.com.sg](http://www.luckyplaza.com.sg)

**ADV. CODE: CKS 03B**

Lightbox on pillar near carpark entrance facing Orchard Road



- Lease Duration: 1 year
- Production Cost: Lightbox to be constructed with all charges to be borne by Licensee (Lightbox / Artwork / BCA)

- All rates quoted herein are subjected to electricity charges, where applicable, GST.
- All specifications/dimensions provided are only an estimation and not to be used as the final installation of the lightbox/panel/sticker-wraps.
- All applications will be reviewed by the Management Council.
- The MCST reserves the right to edit any information contained herein as it deemed fit at any time.



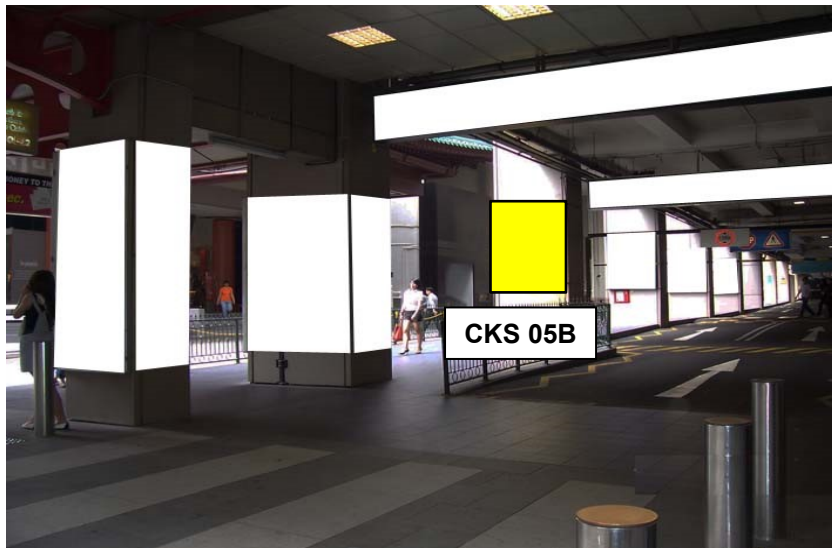
*Lucky Plaza*

**THE MANAGEMENT CORPORATION STRATA TITLE PLAN NO.651**

Management Office: 304 Orchard Road #06-50 Lucky Plaza Singapore 238863 Tel: 6235 3294 Fax: 6734 4764 [www.luckyplaza.com.sg](http://www.luckyplaza.com.sg)

**ADV. CODE: CKS 05B**

Lightbox on pillar near CK Tang facing Orchard Road



- Lease Duration: 1 year
- Production Cost: Lightbox to be constructed with all charges to be borne by Licensee (Lightbox / Artwork / BCA)

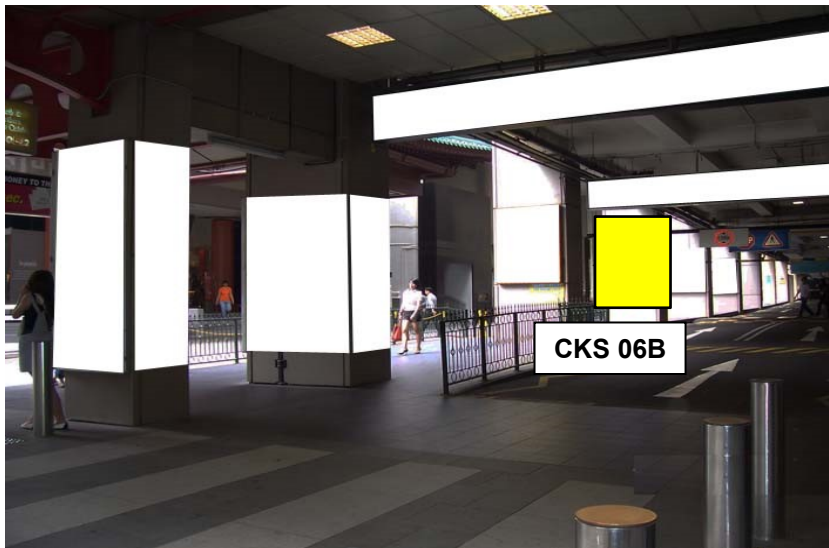
- All rates quoted herein are subjected to electricity charges, where applicable, GST.
- All specifications/dimensions provided are only an estimation and not to be used as the final installation of the lightbox/panel/sticker-wraps.
- All applications will be reviewed by the Management Council.
- The MCST reserves the right to edit any information contained herein as it deemed fit at any time.

**THE MANAGEMENT CORPORATION STRATA TITLE PLAN NO.651**

Management Office: 304 Orchard Road #06-50 Lucky Plaza Singapore 238863 Tel: 6235 3294 Fax: 6734 4764 [www.luckyplaza.com.sg](http://www.luckyplaza.com.sg)

**ADV. CODE: CKS 06B**

Lightbox on pillar near CK Tang facing Orchard Road



- Lease Duration: 1 year
- Production Cost: Lightbox to be constructed with all charges to be borne by Licensee (Lightbox / Artwork / BCA)

- All rates quoted herein are subjected to electricity charges, where applicable, GST.
- All specifications/dimensions provided are only an estimation and not to be used as the final installation of the lightbox/panel/sticker-wraps.
- All applications will be reviewed by the Management Council.
- The MCST reserves the right to edit any information contained herein as it deemed fit at any time.



*Lucky Plaza*

**THE MANAGEMENT CORPORATION STRATA TITLE PLAN NO.651**

Management Office: 304 Orchard Road #06-50 Lucky Plaza Singapore 238863 Tel: 6235 3294 Fax: 6734 4764 [www.luckyplaza.com.sg](http://www.luckyplaza.com.sg)

**ADV. CODE: CKS 07B**

Lightbox on pillar near CK Tang facing Orchard Road



- Lease Duration: 1 year
- Production Cost: Lightbox to be constructed with all charges to be borne by Licensee (Lightbox / Artwork / BCA)

- All rates quoted herein are subjected to electricity charges, where applicable, GST.
- All specifications/dimensions provided are only an estimation and not to be used as the final installation of the lightbox/panel/sticker-wraps.
- All applications will be reviewed by the Management Council.
- The MCST reserves the right to edit any information contained herein as it deemed fit at any time.



**THE MANAGEMENT CORPORATION STRATA TITLE PLAN NO.651**

Management Office: 304 Orchard Road #06-50 Lucky Plaza Singapore 238863 Tel: 6235 3294 Fax: 6734 4764 [www.luckyplaza.com.sg](http://www.luckyplaza.com.sg)

**ADV. CODE: CKS 08B**

Lightbox on pillar near CK Tang facing Orchard Road



- Lease Duration: 1 year
- Production Cost: Lightbox to be constructed with all charges to be borne by Licensee (Lightbox / Artwork / BCA)

- All rates quoted herein are subjected to electricity charges, where applicable, GST.
- All specifications/dimensions provided are only an estimation and not to be used as the final installation of the lightbox/panel/sticker-wraps.
- All applications will be reviewed by the Management Council.
- The MCST reserves the right to edit any information contained herein as it deemed fit at any time.



*Lucky Plaza*

## THE MANAGEMENT CORPORATION STRATA TITLE PLAN NO.651

Management Office: 304 Orchard Road #06-50 Lucky Plaza Singapore 238863 Tel: 6235 3294 Fax: 6734 4764 [www.luckyplaza.com.sg](http://www.luckyplaza.com.sg)

### ADV. CODE: CKS 09C

Lightbox on pillar near CK Tang facing Orchard Road



- Lease Duration: 1 year
- Production Cost: Lightbox to be constructed with all charges to be borne by Licensee (Lightbox / Artwork / BCA)

- All rates quoted herein are subjected to electricity charges, where applicable, GST.
- All specifications/dimensions provided are only an estimation and not to be used as the final installation of the lightbox/panel/sticker-wraps.
- All applications will be reviewed by the Management Council.
- The MCST reserves the right to edit any information contained herein as it deemed fit at any time.





*Lucky Plaza*

**THE MANAGEMENT CORPORATION STRATA TITLE PLAN NO.651**

Management Office: 304 Orchard Road #06-50 Lucky Plaza Singapore 238863 Tel: 6235 3294 Fax: 6734 4764 [www.luckyplaza.com.sg](http://www.luckyplaza.com.sg)

**ADV. CODE: CKS 10C**

Lightbox on pillar near CK Tang facing Orchard Road



- Lease Duration: 1 year
- Production Cost: Lightbox to be constructed with all charges to be borne by Licensee (Lightbox / Artwork / BCA)

- All rates quoted herein are subjected to electricity charges, where applicable, GST.
- All specifications/dimensions provided are only an estimation and not to be used as the final installation of the lightbox/panel/sticker-wraps.
- All applications will be reviewed by the Management Council.
- The MCST reserves the right to edit any information contained herein as it deemed fit at any time.



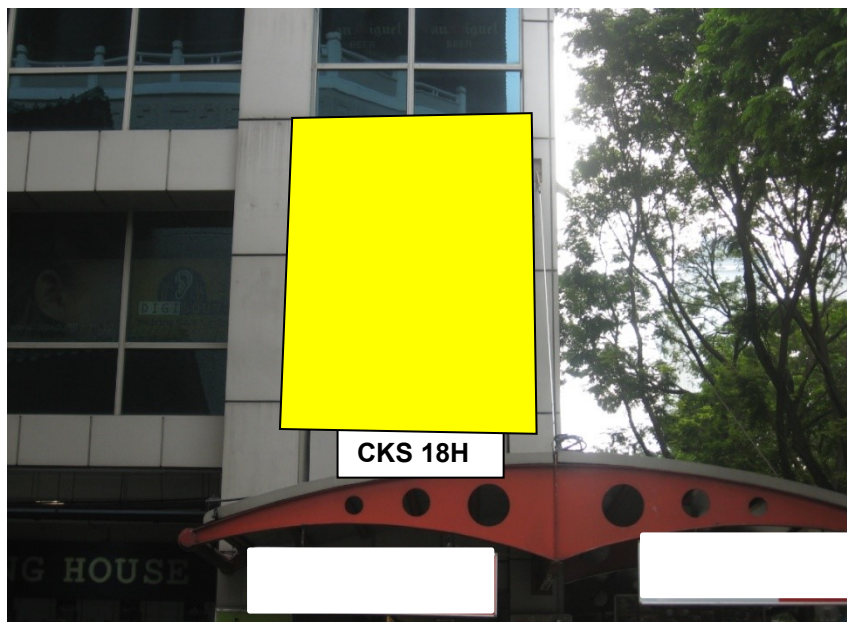
*Lucky Plaza*

**THE MANAGEMENT CORPORATION STRATA TITLE PLAN NO.651**

Management Office: 304 Orchard Road #06-50 Lucky Plaza Singapore 238863 Tel: 6235 3294 Fax: 6734 4764 [www.luckyplaza.com.sg](http://www.luckyplaza.com.sg)

**ADV. CODE: CKS 18H**

Advertisement display facing CK Tang



- Est. dimension: 4.5M(H) X4.0M(W)
- Lease Duration: 1 year
- Production Cost: Lightbox to be constructed with all charges to be borne by Licensee (Lightbox / Artwork / BCA)

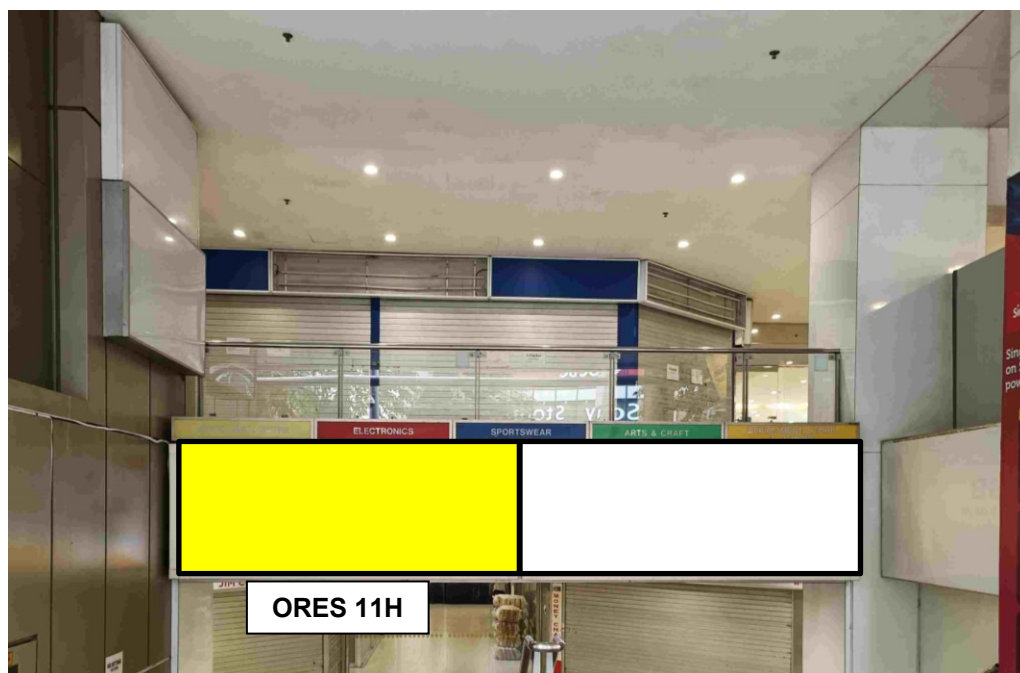
- All rates quoted herein are subjected to electricity charges, where applicable, GST.
- All specifications/dimensions provided are only an estimation and not to be used as the final installation of the lightbox/panel/sticker-wraps.
- All applications will be reviewed by the Management Council.
- The MCST reserves the right to edit any information contained herein as it deemed fit at any time.

**THE MANAGEMENT CORPORATION STRATA TITLE PLAN NO.651**

Management Office: 304 Orchard Road #06-50 Lucky Plaza Singapore 238863 Tel: 6235 3294 Fax: 6734 4764 [www.luckyplaza.com.sg](http://www.luckyplaza.com.sg)

**ADV. CODE: ORES 11H**

Signage near entrance facing Orchard Road



- Est. dimension: 1.9M(H) x 1.23M(W)
- Lease Duration: 1 year
- Production Cost: Lightbox to be constructed with all charges to be borne by Licensee (Lightbox / Artwork / BCA)

- All rates quoted herein are subjected to electricity charges, where applicable, GST.
- All specifications/dimensions provided are only an estimation and not to be used as the final installation of the lightbox/panel/sticker-wraps.
- All applications will be reviewed by the Management Council.
- The MCST reserves the right to edit any information contained herein as it deemed fit at any time.

**THE MANAGEMENT CORPORATION STRATA TITLE PLAN NO.651**

Management Office: 304 Orchard Road #06-50 Lucky Plaza Singapore 238863 Tel: 6235 3294 Fax: 6734 4764 [www.luckyplaza.com.sg](http://www.luckyplaza.com.sg)

**ADV. CODE: ORES 12I**

Signage near entrance facing Orchard Road



- Est. dimension: 1.9M(H) x 1.23M(W)
- Lease Duration: 1 year
- Production Cost: Lightbox to be constructed with all charges to be borne by Licensee (Lightbox / Artwork / BCA)

- All rates quoted herein are subjected to electricity charges, where applicable, GST.
- All specifications/dimensions provided are only an estimation and not to be used as the final installation of the lightbox/panel/sticker-wraps.
- All applications will be reviewed by the Management Council.
- The MCST reserves the right to edit any information contained herein as it deemed fit at any time.



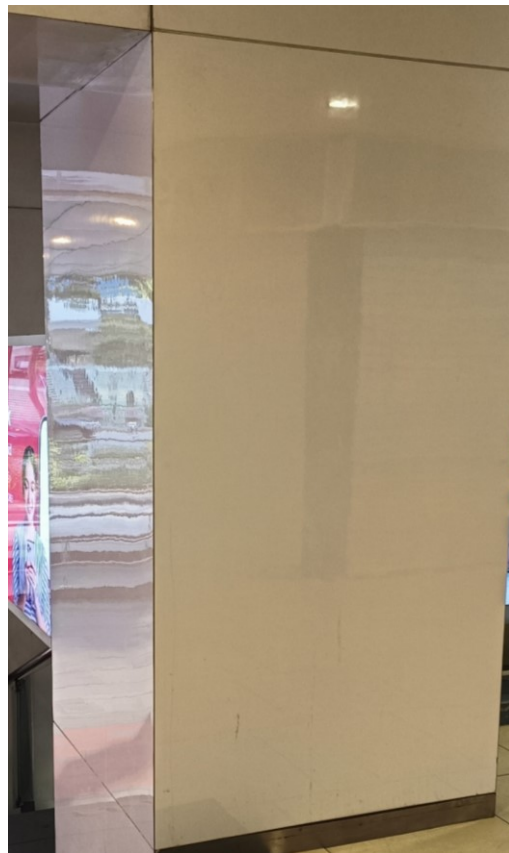
*Lucky Plaza*

**THE MANAGEMENT CORPORATION STRATA TITLE PLAN NO.651**

Management Office: 304 Orchard Road #06-50 Lucky Plaza Singapore 238863 Tel: 6235 3294 Fax: 6734 4764 [www.luckyplaza.com.sg](http://www.luckyplaza.com.sg)

**ADV. CODE: ORES 14J**

Advertisement sticker-wraps on pillar at left side of main entrance



- Lease Duration: 1 year
- Production Cost: Sticker-wrap will be installed with all charges to be borne by Licensee (Artwork / BCA)
- All rates quoted herein are subjected to electricity charges, where applicable, GST.
- All specifications/dimensions provided are only an estimation and not to be used as the final installation of the lightbox/panel/sticker-wraps.
- All applications will be reviewed by the Management Council.
- The MCST reserves the right to edit any information contained herein as it deemed fit at any time.





*Lucky Plaza*

**THE MANAGEMENT CORPORATION STRATA TITLE PLAN NO.651**

Management Office: 304 Orchard Road #06-50 Lucky Plaza Singapore 238863 Tel: 6235 3294 Fax: 6734 4764 [www.luckyplaza.com.sg](http://www.luckyplaza.com.sg)

**ADV. CODE: ORES 20K**

Advertisement sticker-wraps on pillar at right side of main entrance



- Lease Duration: 1 year
- Production Cost: Sticker-wrap will be installed with all charges to be borne by Licensee (Artwork / BCA)
- All rates quoted herein are subjected to electricity charges, where applicable, GST.
- All specifications/dimensions provided are only an estimation and not to be used as the final installation of the lightbox/panel/sticker-wraps.
- All applications will be reviewed by the Management Council.
- The MCST reserves the right to edit any information contained herein as it deemed fit at any time.

**THE MANAGEMENT CORPORATION STRATA TITLE PLAN NO.651**

Management Office: 304 Orchard Road #06-50 Lucky Plaza Singapore 238863 Tel: 6235 3294 Fax: 6734 4764 [www.luckyplaza.com.sg](http://www.luckyplaza.com.sg)

**ADV. CODE: ORRS 04E**

Signage on the right facing Orchard Road



- Lease Duration: 1 year
- Production Cost: Lightbox to be constructed with all charges to be borne by Licensee

- All rates quoted herein are subjected to electricity charges, where applicable, GST.
- All specifications/dimensions provided are only an estimation and not to be used as the final installation of the lightbox/panel/sticker-wraps.
- All applications will be reviewed by the Management Council.
- The MCST reserves the right to edit any information contained herein as it deemed fit at any time.

**THE MANAGEMENT CORPORATION STRATA TITLE PLAN NO.651**

Management Office: 304 Orchard Road #06-50 Lucky Plaza Singapore 238863 Tel: 6235 3294 Fax: 6734 4764 [www.luckyplaza.com.sg](http://www.luckyplaza.com.sg)

**ADV. CODE: TBS 08E**

Lightbox located on pillar facing Tong Building



- Est. dimension: 1.9M(H) x 0.97M(W)
- Lease Duration: 1 year
- Production Cost: Lightbox to be constructed with all charges to be borne by Licensee (Lightbox / Artwork / BCA)

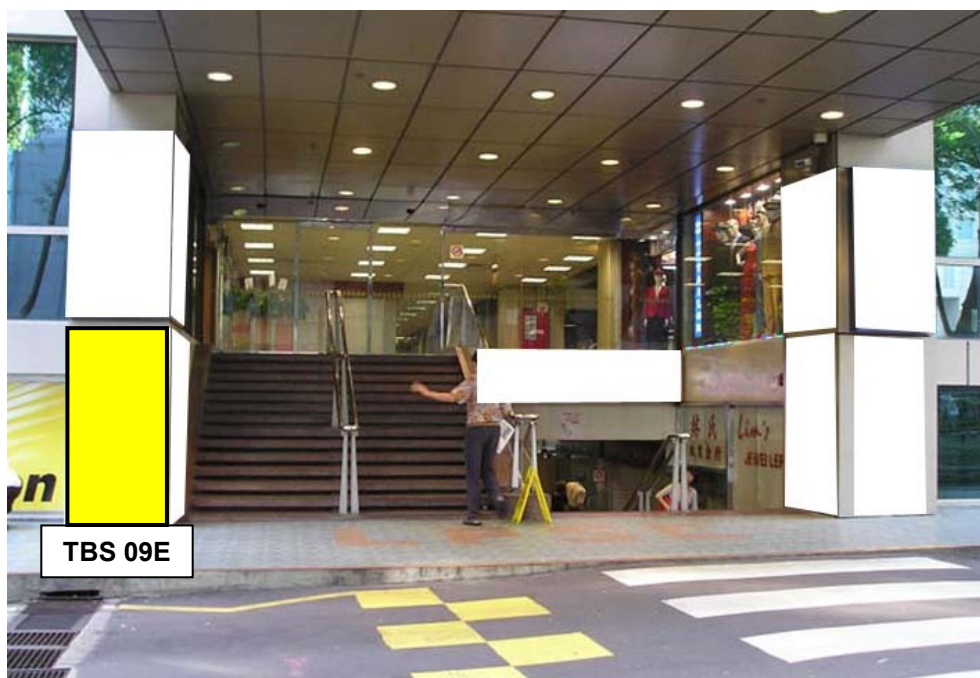
- All rates quoted herein are subjected to electricity charges, where applicable, GST.
- All specifications/dimensions provided are only an estimation and not to be used as the final installation of the lightbox/panel/sticker-wraps.
- All applications will be reviewed by the Management Council.
- The MCST reserves the right to edit any information contained herein as it deemed fit at any time.

**THE MANAGEMENT CORPORATION STRATA TITLE PLAN NO.651**

Management Office: 304 Orchard Road #06-50 Lucky Plaza Singapore 238863 Tel: 6235 3294 Fax: 6734 4764 [www.luckyplaza.com.sg](http://www.luckyplaza.com.sg)

**ADV. CODE: TBS 09E**

Lightbox located on pillar facing Tong Building



- Lease Duration: 1 year
- Production Cost: Lightbox to be constructed with all charges to be borne by Licensee (Lightbox / Artwork / BCA)

- All rates quoted herein are subjected to electricity charges, where applicable, GST.
- All specifications/dimensions provided are only an estimation and not to be used as the final installation of the lightbox/panel/sticker-wraps.
- All applications will be reviewed by the Management Council.
- The MCST reserves the right to edit any information contained herein as it deemed fit at any time.

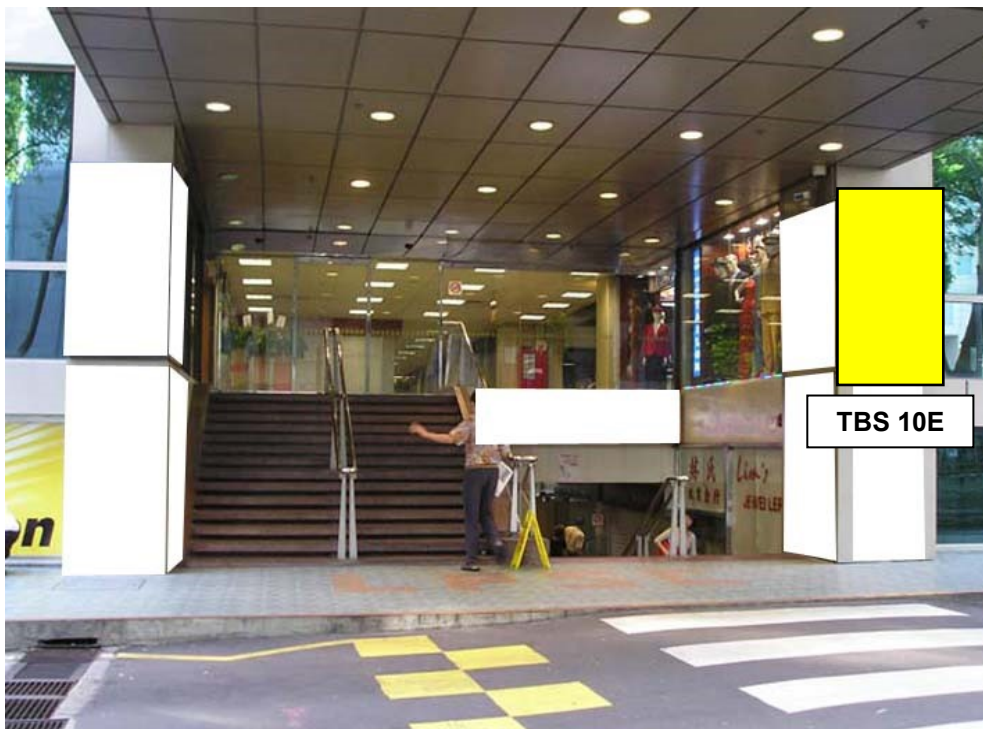


**THE MANAGEMENT CORPORATION STRATA TITLE PLAN NO.651**

Management Office: 304 Orchard Road #06-50 Lucky Plaza Singapore 238863 Tel: 6235 3294 Fax: 6734 4764 [www.luckyplaza.com.sg](http://www.luckyplaza.com.sg)

**ADV. CODE: TBS 10E**

Lightbox located on pillar facing Tong Building



- Lease Duration: 1 year
- Production Cost: Lightbox to be constructed with all charges to be borne by Licensee (Lightbox / Artwork / BCA)

- All rates quoted herein are subjected to electricity charges, where applicable, GST.
- All specifications/dimensions provided are only an estimation and not to be used as the final installation of the lightbox/panel/sticker-wraps.
- All applications will be reviewed by the Management Council.
- The MCST reserves the right to edit any information contained herein as it deemed fit at any time.



**THE MANAGEMENT CORPORATION STRATA TITLE PLAN NO.651**

Management Office: 304 Orchard Road #06-50 Lucky Plaza Singapore 238863 Tel: 6235 3294 Fax: 6734 4764 [www.luckyplaza.com.sg](http://www.luckyplaza.com.sg)

**ADV. CODE: TBS 11E**

Lightbox located on pillar facing Tong Building



- Lease Duration: 1 year
- Production Cost: Lightbox to be constructed with all charges to be borne by Licensee (Lightbox / Artwork / BCA)

- All rates quoted herein are subjected to electricity charges, where applicable, GST.
- All specifications/dimensions provided are only an estimation and not to be used as the final installation of the lightbox/panel/sticker-wraps.
- All applications will be reviewed by the Management Council.
- The MCST reserves the right to edit any information contained herein as it deemed fit at any time.

**THE MANAGEMENT CORPORATION STRATA TITLE PLAN NO.651**

Management Office: 304 Orchard Road #06-50 Lucky Plaza Singapore 238863 Tel: 6235 3294 Fax: 6734 4764 [www.luckyplaza.com.sg](http://www.luckyplaza.com.sg)

**ADV. CODE: TBS 16G****Signage at side entrance facing Tong Building**

- Lease Duration: 1 year
- Production Cost: Lightbox to be constructed with all charges to be borne by Licensee (Lightbox / Artwork / BCA)

- All rates quoted herein are subjected to electricity charges, where applicable, GST.
- All specifications/dimensions provided are only an estimation and not to be used as the final installation of the lightbox/panel/sticker-wraps.
- All applications will be reviewed by the Management Council.
- The MCST reserves the right to edit any information contained herein as it deemed fit at any time.

**THE MANAGEMENT CORPORATION STRATA TITLE PLAN NO.651**

Management Office: 304 Orchard Road #06-50 Lucky Plaza Singapore 238863 Tel: 6235 3294 Fax: 6734 4764 [www.luckyplaza.com.sg](http://www.luckyplaza.com.sg)

**ADV. CODE: WLPS 21 to 23****Lightbox around Bubble Lift No. 10, Level 1**

- Lease Duration: 1 year
- Production Cost: To be installed and borne by Licensee (Lightbox / Artwork)

- All rates quoted herein are subjected to electricity charges, where applicable, GST.
- All specifications/dimensions provided are only an estimation and not to be used as the final installation of the lightbox/panel/sticker-wraps.
- All applications will be reviewed by the Management Council.
- The MCST reserves the right to edit any information contained herein as it deemed fit at any time.

**THE MANAGEMENT CORPORATION STRATA TITLE PLAN NO.651**

Management Office: 304 Orchard Road #06-50 Lucky Plaza Singapore 238863 Tel: 6235 3294 Fax: 6734 4764 [www.luckyplaza.com.sg](http://www.luckyplaza.com.sg)

**ADV. CODE: WLPS 24 TO 26****Lightbox around Bubble Lift No. 10, Basement 1**

- Lease Duration: 1 year
- Production Cost: To be installed and borne by Licensee (Lightbox / Artwork)

- All rates quoted herein are subjected to electricity charges, where applicable, GST.
- All specifications/dimensions provided are only an estimation and not to be used as the final installation of the lightbox/panel/sticker-wraps.
- All applications will be reviewed by the Management Council.
- The MCST reserves the right to edit any information contained herein as it deemed fit at any time.





*Lucky Plaza*

**THE MANAGEMENT CORPORATION STRATA TITLE PLAN NO.651**

Management Office: 304 Orchard Road #06-50 Lucky Plaza Singapore 238863 Tel: 6235 3294 Fax: 6734 4764 [www.luckyplaza.com.sg](http://www.luckyplaza.com.sg)

**ADV. CODE: WLPS 32 to 36**

Sticker-wraps on escalators' claddings facing  
Information Counter



- Lease Duration: 1 year
- Production Cost: Sticker-wraps will be installed with charges borne by Licensee
- All rates quoted herein are subjected to electricity charges, where applicable, GST.
- All specifications/dimensions provided are only an estimation and not to be used as the final installation of the lightbox/panel/sticker-wraps.
- All applications will be reviewed by the Management Council.
- The MCST reserves the right to edit any information contained herein as it deemed fit at any time.





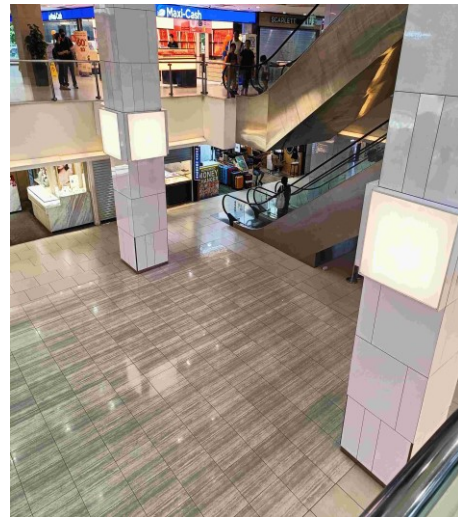
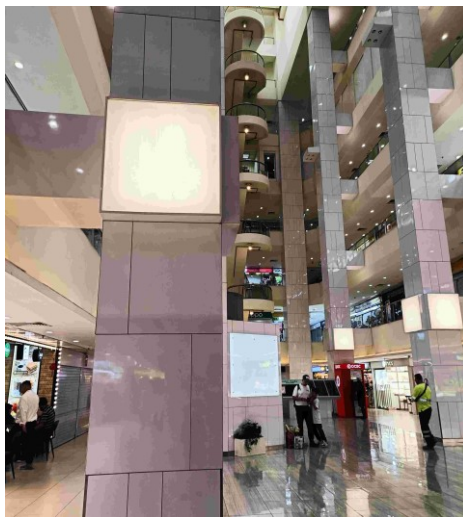
# Lucky Plaza

## THE MANAGEMENT CORPORATION STRATA TITLE PLAN NO.651

Management Office: 304 Orchard Road #06-50 Lucky Plaza Singapore 238863 Tel: 6235 3294 Fax: 6734 4764 [www.luckyplaza.com.sg](http://www.luckyplaza.com.sg)

## ADV. CODE: WLPS 37 to 41

### Lightboxes on podiums in atrium at L1



- Lease Duration: 1 year
- Production Cost: Visual inserts will be installed with charges borne by Licensee

- All rates quoted herein are subjected to electricity charges, where applicable, GST.
- All specifications/dimensions provided are only an estimation and not to be used as the final installation of the lightbox/panel/sticker-wraps.
- All applications will be reviewed by the Management Council.
- The MCST reserves the right to edit any information contained herein as it deemed fit at any time.